

# **MEDIUM WEIGHT JACKETS**

Ideal for the whole team. The technical fabrics and stylish designs make these jackets ideal to wear in a moderate climate.



ALT-CEJ  
*Mens Celsius Jacket*

**Fabric** 100% polyester, 50D PVC with milky coating, lined in micro polar fleece • water resistant fleece lined jacket  
• full zip • inner pocket • elasticated cuffs with velcro closure  
• welt side pockets

BL N R RB SB

STANDARD FIT

HALF CHEST (CM)							
S	M	L	XL	2XL	3XL	4XL	5XL
57	60	63	66	69	72	75	78





MENS & LADIES STYLES LINED IN MICRO POLAR FLEECE

ALT-CEJL

*Ladies Celsius Jacket*

**Fabric** 100% polyester, 50D PVC with milky coating, lined in micro polar fleece • water resistant fleece lined jacket  
• full zip • inner pocket • elasticated cuffs with velcro closure  
• welt side pockets

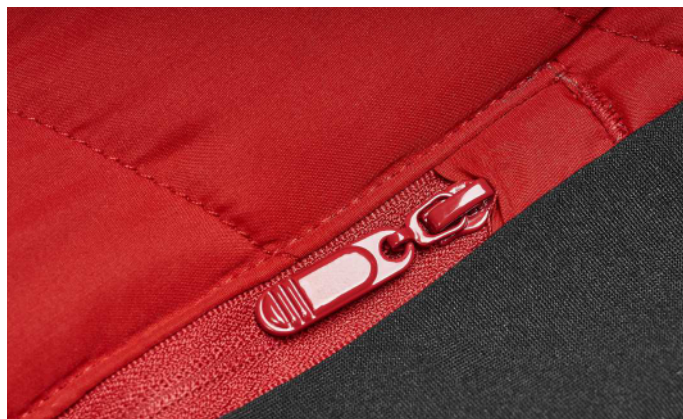
BL N R RB SB

STANDARD FIT

HALF CHEST (CM)

S	M	L	XL	2XL	3XL	4XL
51	54	57	60	63	66	69





## ALT-ANM

### Mens Andes Jacket

**Weight** 215g/m<sup>2</sup> **Fabric body:** 100% polyester pongee with PA coating • **contrast panels:** 96% polyester, 4% spandex • lightly padded jacket features unique diagonal stitch detail on front and back • semi-elasticated cuffs

BL N R RB

STANDARD FIT

HALF CHEST (CM)

S	M	L	XL	2XL	3XL	4XL	5XL
50	53	56	59	62	65	68	71





UNIQUE DIAGONAL STITCH DETAIL ON FRONT & BACK

ALT-ANL

## Ladies Andes Jacket

Weight 215g/m<sup>2</sup> Fabric body: 100% polyester pongee with PA coating • contrast panels: 96% polyester, 4% spandex • lightly padded jacket features unique diagonal stitch detail on front and back • semi-elasticated cuffs

BL N R RB

STANDARD FIT

HALF CHEST (CM)

S	M	L	XL	2XL	3XL	4XL
45	48	51	54	57	60	63





ALT-PAM, ALT-PAL & ALT-PAK ARE AVAILABLE IN THE 6 COLOURS SHOWN ON THIS PAGE





# Our bestselling Softshell IS A TOP PICK FOR THE WHOLE TEAM

## ALT-PAM

### Mens Palermo Softshell Jacket

**Weight** 300g/m<sup>2</sup> **Fabric** 100% polyester knit bonded with micro fleece • full zip • zip pockets • elasticated binding at sleeves



STANDARD FIT

HALF CHEST (CM)

S	M	L	XL	2XL	3XL	4XL	5XL
54	57	60	63	66	69	72	75

## ALT-PAL

### Ladies Palermo Softshell Jacket

**Weight** 300g/m<sup>2</sup> **Fabric** 100% polyester knit bonded with micro fleece • full zip • zip pockets • elasticated binding at sleeves



STANDARD FIT

HALF CHEST (CM)

S	M	L	XL	2XL	3XL	4XL
48	51	54	57	60	63	66

## ALT-PAK

### Kids Palermo Softshell Jacket

**Weight** 300g/m<sup>2</sup> **Fabric** 100% polyester knit bonded with micro fleece • full zip • zip pockets • elasticated binding at sleeves



STANDARD FIT

HALF CHEST (CM)

AGE:	4	6	8	10	12	14
CM:	35	38	41	44	47	50



MEDIUM WEIGHT JACKETS



NEXT GENERATION DIGITAL PRINT





## ALT-COJ

**Mens Colorado Jacket**

**Fabric** 100% polyester outer, 210T polyester lining, polyester wadding • lightly padded bomber jacket • elasticated ribbing on hem and cuffs • slanted zipped pockets • trendy top stitching detail

BL C CAM KH MG N

STANDARD FIT

HALF CHEST (CM)

XS	S	M	L	XL	2XL	3XL	4XL	5XL
50	54	58	62	66	70	74	78	82

## ALT-COJL

**Ladies Colorado Jacket**

**Fabric** 100% polyester outer, 210T polyester lining, polyester wadding • lightly padded bomber jacket • elasticated ribbing on hem and cuffs • slanted zipped pockets • trendy top stitching detail

BL C CAM KH MG N

STANDARD FIT

HALF CHEST (CM)

S	M	L	XL	2XL	3XL	4XL
51	54	57	60	63	66	69





#### ALT-HUD

### Mens Hudson Jacket

- Fabric** 100% polyester 40D, 210T lining, polyester wadding
- fully padded quilted jacket • slanted zippered pockets
  - elasticated binding on bottom hem and sleeves

BL GY N

STANDARD FIT

HALF CHEST (CM)

S	M	L	XL	2XL	3XL	4XL	5XL
52	56	60	64	68	72	76	80

#### ALT-HUL

### Ladies Hudson Jacket

- Fabric** 100% polyester 40D, 210T lining, polyester wadding
- fully padded quilted jacket • slanted zippered pockets
  - elasticated binding on bottom hem and sleeves

BL GY N

STANDARD FIT

HALF CHEST (CM)

S	M	L	XL	2XL	3XL	4XL
50	54	58	62	66	70	74



NEXT GENERATION DIGITAL PRINT

ALT-HUD, ALT-HUL & ALT-HUK ARE AVAILABLE IN THE 3 COLOURS SHOWN ON THIS PAGE

**ALT-HUK**  
***Kids Hudson Jacket***

- Fabric** 100% polyester 40D, 210T lining, polyester wadding  
• fully padded quilted jacket • slanted zipped pockets  
• elasticated binding on bottom hem and sleeves

BL GY N

STANDARD FIT

HALF CHEST (CM)						
AGE:	4	6	8	10	12	14
CM:	38	41	44	47	50	53





## BAS-10200

### Mens Crusader Bomber Jacket

**Fabric** 100% polyester outer, 210T polyester lining, polyester wadding • metal zip pockets • full metal zip • pocket on left sleeve with metal zip and additional open pocket • knitted ribbed collar, cuffs and hem

BL MG N

HALF CHEST (CM) STANDARD FIT

S	M	L	XL	2XL	3XL	4XL	5XL
56	59	62	65	68	71	74	77





# ENJOY WARMTH & COMFORT WITH THIS CLASSIC BOMBER JACKET



## BAS-10201

### Ladies Crusader Bomber Jacket

**Fabric** 100% polyester outer, 210T polyester lining, polyester wadding • metal zip pockets • full metal zip  
• pocket on left sleeve with metal zip and additional open pocket • knitted ribbed collar, cuffs and hem

BL MG N

#### HALF CHEST (CM) STANDARD FIT

S	M	L	XL	2XL	3XL	4XL
51	54	57	60	63	66	69



# PREMIUM COMFORT & INSULATION



## BIZ-9301

### Mens Pinnacle Softshell Jacket

**Fabric** 100% polyester softshell with bonded textured fleece lining • zip pockets • full zip • chin protector • wind placket • adjustable velcro cuffs

BL GY N

#### HALF CHEST (CM) STANDARD FIT

S	M	L	XL	2XL	3XL	4XL
56	58.5	61	63.5	66	70	78





FOR A SUBTLE BRANDING EFFECT,  
CONSIDER DEBOSSING



FOR A MODERN BRANDING EFFECT,  
CHOOSE DIGITAL PRINTING



## BIZ-9302

### Ladies Pinnacle Softshell Jacket

**Fabric** 100% polyester softshell with bonded textured fleece lining • zip pockets • full zip • chin protector • wind placket • adjustable velcro cuffs

BL GY N

HALF CHEST (CM) **STANDARD FIT**

S	M	L	XL	2XL	3XL
49	52.5	56	59.5	63	66.5





MEDIUM WEIGHT JACKETS



### JC-SL-111-A

#### Mens Nagano Softshell Jacket

**Weight** 300g/m<sup>2</sup> **Fabric** 100% polyester bonded to 100% polyester fleece  
 • zip pockets with branded zip pullers • full zip with branded zip pullers  
 • wind placket • chin protector • adjustable micro velcro cuffs • reflective  
 Slazenger logo on centre back panel

BL N R RB

#### HALF CHEST (CM) STANDARD FIT

S	M	L	XL	2XL	3XL	4XL	5XL
54	57	60	63	66	69	72	75

### JC-SL-113-A

#### Ladies Nagano Softshell Jacket

**Weight** 300g/m<sup>2</sup> **Fabric** 100% polyester bonded to 100% polyester fleece  
 • zip pockets with branded zip pullers • full zip with branded zip pullers  
 • wind placket • chin protector • adjustable micro velcro cuffs • reflective  
 Slazenger logo on centre back panel

BL N R RB

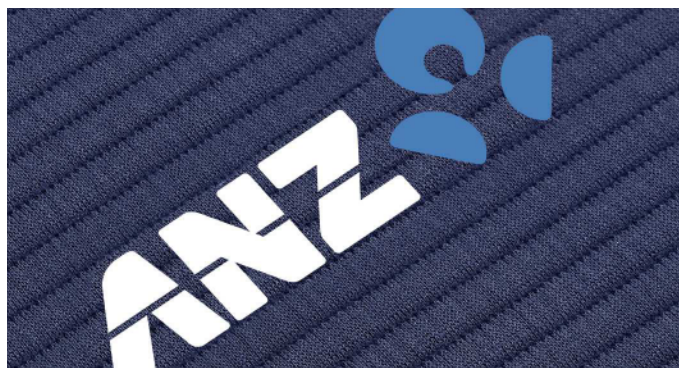
#### HALF CHEST (CM) STANDARD FIT

S	M	L	XL	2XL	3XL	4XL
49	52	55	58	61	64	67

JC-SL-111-A & JC-SL-113-A ARE AVAILABLE IN THE 4 COLOURS SHOWN ON THIS PAGE



PRICE INCLUDES EMBROIDERY. SEE PAGE 3 FOR DETAILS.



FOR A MODERN BRANDING EFFECT, CHOOSE DIGITAL PRINTING

## SLAZ-11426

### Mens Ridge Jacket

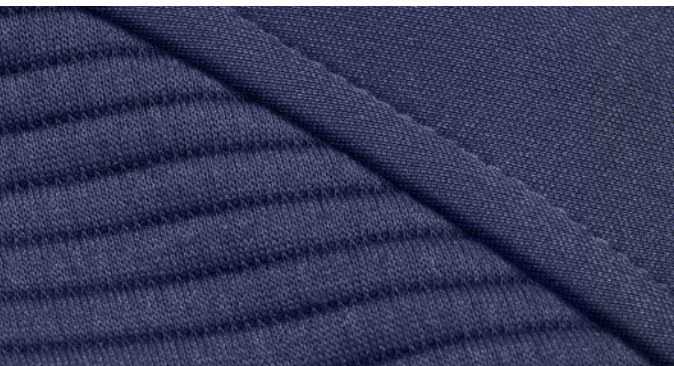
- Fabric** 100% polyester • 100% polyester knit bonded with micro fleece
- mixed fabric jacket • full zip with branded zip puller • concealed pockets
- curved back panel • reflective Slazenger logo at centre back collar

BL GY N

#### HALF CHEST (CM) STANDARD FIT

S	M	L	XL	2XL	3XL	4XL	5XL
54	57	60	63	66	69	72	75





### SLAZ-11427 Ladies Ridge Jacket

**Fabric** 100% polyester • 100% polyester knit bonded with micro fleece  
• mixed fabric jacket • full zip with branded zip puller • concealed pockets  
• curved back panel • reflective Slazenger logo at centre back collar

BL GY N

HALF CHEST (CM) STANDARD FIT

S	M	L	XL	2XL	3XL	4XL
49	52	55	58	61	64	67





## SLAZ-11424

### Mens Astana Jacket

**Fabric** 100% polyester • 95% polyester, 5% spandex  
 • mixed fabric jacket • zip pockets with branded zip pullers  
 • full zip with branded zip puller • chin protector • partial wind  
 placket • elasticated binding on hem and sleeves • hood  
 • reflective Slazenger logo at back bottom hem

BL GY N

#### HALF CHEST (CM) STANDARD FIT

S	M	L	XL	2XL	3XL	4XL	5XL
54	57	60	63	66	69	72	75



PRICE INCLUDES EMBROIDERY. SEE PAGE 3 FOR DETAILS.

**SLAZ-11425****Ladies Astana Jacket**

- Fabric** 100% polyester • 95% polyester, 5% spandex
- mixed fabric jacket • zip pockets with branded zip pullers
  - full zip with branded zip puller • chin protector • partial wind placket
  - elasticated binding on hem and sleeves • hood
  - reflective Slazenger logo at back bottom hem

**BL** **GY** **N****HALF CHEST (CM) STANDARD FIT**

S	M	L	XL	2XL	3XL	4XL
50	53	56	59	62	65	68





### BIZ-6500

#### Mens Geneva Softshell Jacket

**Weight** 240g/m<sup>2</sup> **Fabric** 100% breathable polyester bonded with contrast textured micro-ribbed fleece • windproof and water repellent • pockets with contrast zips and pullers • full zip with contrast puller • contrast chin protector and wind placket • contrast bonded interior fleece • adjustable velcro cuffs



#### HALF CHEST (CM) STANDARD FIT

S	M	L	XL	2XL	3XL	4XL
57	59	61	63	65	70	78



# HIGHLIGHT YOUR BRAND THIS WINTER

MEDIUM WEIGHT JACKETS



## BIZ-6501

### Ladies Geneva Softshell Jacket

**Weight** 240g/m<sup>2</sup> **Fabric** 100% breathable polyester bonded with contrast textured micro-ribbed fleece • windproof and water repellent • pockets with contrast zips and pullers • full zip with contrast puller • contrast chin protector and wind placket • contrast bonded interior fleece • adjustable velcro cuffs



HALF CHEST (CM) **STANDARD FIT**

S	M	L	XL	2XL	3XL
49	52.5	56	59.5	63	66.5





FOR A SUBTLE BRANDING EFFECT, CONSIDER DEBOSSING



# Maxson Softshell Jacket

Designed for movement while providing protection from the elements, the Maxson features a waterproof, breathable 3-layer construction, as well as ergonomic sleeves and articulated elbows for a superior fit.



WATERPROOF



3 LAYER BONDED



STRETCH



SHIELDTECH

ELE-7304 & ELE-7305 ARE AVAILABLE IN THE 4 COLOURS SHOWN ON THIS PAGE

ELE-7304

## Mens Maxson Softshell Jacket

**Weight** 270g/m<sup>2</sup> **Fabric** 100% mechanical stretch woven bonded to 100% polyester, anti-pill treated micro fleece  
**lining:** 100% polyester brushed tricot knit • concealed zip pocket • full zip with branded zip puller • wind placket  
 • hidden inner pockets • adjustable velcro cuffs

BL BU GY N

HALF CHEST (CM) **STANDARD FIT**

S	M	L	XL	2XL	3XL	4XL
54	57	61	65	68.5	74	79





FOR A MODERN BRANDING EFFECT, CHOOSE DIGITAL PRINTING

ELE-7305

## Ladies Maxson Softshell Jacket

**Weight** 270g/m<sup>2</sup> **Fabric** 100% mechanical stretch woven bonded to 100% polyester, anti-pill treated micro fleece  
• **lining:** 100% polyester brushed tricot knit • concealed zip pocket • full zip with branded zip puller • wind placket  
• hidden inner pockets • adjustable velcro cuffs

BL BU GY N

HALF CHEST (CM) **STANDARD FIT**

S	M	L	XL	2XL	3XL
50	53.5	57	61	65	68.5

PRICE INCLUDES DEBOSSING, DIGITAL TRANSFER OR EMBROIDERY. SEE PAGE 3 FOR DETAILS.



NEW

100%

100%

GARY  
PLAYER

MEDIUM WEIGHT JACKETS



REFLECTIVE BLACK KNIGHT LOGO  
ON BACK OF COLLAR



REFLECTIVE BLACK KNIGHT LOGO  
ON BACK OF COLLAR



## JC-GP-116-A

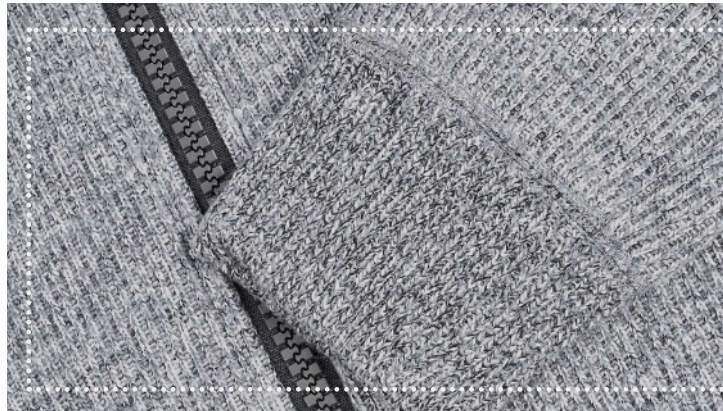
### Unisex Ohio Knitted Jacket

- Fabric** 100% knitted polyester bonded to 100% polyester fleece
- nylon collar with reflective Black Knight logo
  - slanted pockets with hidden zips
  - chunky full zip with branded zip puller
  - ribbed waistband and cuffs

BL GY N

HALF CHEST (CM) L STANDARD FIT • M STANDARD FIT

S	M	L	XL	2XL	3XL	4XL	5XL
51	54	57	60	63	66	69	72



FOR A TRADITIONAL BRANDING EFFECT, SELECT EMBROIDERY



## Scotia Light Down Jacket

High-tech minimalism can go a long way, especially when it looks this good. With its lightweight, compactability and multi-pocket design, the Scotia offers active people a versatile and stylish apparel solution.



BREATHABLE



WATER  
REPELLENT



THERMALTECH



reddot  
design award

ELE-5610

## Mens Scotia Light Down Jacket

**Fabric** 100% polyester dull cire 380T, woven with water repellent finish • **lining** 100% polyester dull cire 380T • **filling** 90% down, 10% feather • padded and quilted outer and lining • zip pockets with branded zip pullers • full zip with branded zip puller • chin protector • wind placket • chest zip pocket with branded zip puller • zip pocket on left sleeve • elasticated binding on hem and armholes

BL

HALF CHEST (CM) **STANDARD FIT**

S	M	L	XL	2XL	3XL	4XL
57	60	63	66	69	72	75

ELE-5611

## Ladies Scotia Light Down Jacket

**Fabric** 100% polyester dull cire 380T, woven with water repellent finish • **lining** 100% polyester dull cire 380T • **filling** 90% down, 10% feather • padded and quilted outer and lining • zip pockets with branded zip pullers • full zip with branded zip puller • chin protector • wind placket • chest zip pocket with branded zip puller • zip pocket on left sleeve • elasticated binding on hem and armholes

BL

HALF CHEST (CM) **STANDARD FIT**

S	M	L	XL	2XL	3XL
49	52	55	58	61	64



MENS & LADIES JACKETS ARE  
SUPPLIED WITH INTERCHANGEABLE  
BLACK & ORANGE PULLER STRINGS