



articulmedia

articulmedia



HEAVYWEIGHT JACKETS

Ideal for winter, this range includes a selection of padded Heavyweight Jackets, designed to keep you warm on those cold winter days.





DETACHABLE ZIP-OFF HOOD



SHOULDER EPAULETTES



QUILTED TAFETTA LINING



OPEN END
SLEEVE

KNITTED INNER
SLEEVE CUFF

SENTRY PARKA JACKET

ALT-1700

Fabric 70D / 190T 100% polyester, padded and lined in quilted Tafetta

Description detachable hood with drawcord and toggles • concealed zip features storm flap with press stud closure • inner pocket • open end sleeve with knitted inner cuff • two bottom patch pockets with press stud closure flap • jacket features chest patch pocket with press stud closure flap • eyelets under arms • shoulder epaulettes with press studs

Colours BL N OL

CHEST (CM)

SIZE	S	M	L	XL	2XL	3XL	4XL	5XL
CM	118	126	134	142	150	158	166	174







SHIFT SINGLE-LINED FREEZER JACKET

ALT-1800

Fabric shell: 105g/m², 100% polyester Oxford • inner: 180g/m², 100% polyester quilted Pongee

Description hooded • monza style chest pocket • two monza style bottom pockets • elasticated cuffs • rated to work in environments as low as -5 degrees celsius

Colours

N

HALF CHEST (CM)

SIZE	S	M	L	XL	2XL	3XL	4XL	5XL
CM	62.5	65	67.5	70	72.5	75	77.5	80

ELASTICATED
CUFFS →

PRICE INCLUDES EMBROIDERY. SEE PAGE 3 FOR DETAILS.

FOR MAXIMUM PROTECTION PAIR THE
SHIFT SINGLE-LINED FREEZER JACKET WITH
THE SHIFT SINGLE-LINED FREEZER PANTS



SHIFT SINGLE-LINED FREEZER PANTS

ALT-1801

For full product details, see page W 117







ARCTIC DOUBLE-LINED FREEZER JACKET

ALT-1802

Fabric shell: 105g/m², 100% polyester Oxford • padding: 250g/m², 100% polyester wadding • lining: 190g/m², 80% polyester 20% cotton twill

Description hooded • monza style chest pocket • two monza style bottom pockets • elasticated cuffs • rated to work in environments as low as -15 degrees celsius

Colours 

HALF CHEST (CM)

SIZE	S	M	L	XL	2XL	3XL	4XL	5XL
CM	65	67.5	70	72.5	75	77.5	80	82.5

ELASTICATED CUFFS →

PRICE INCLUDES EMBROIDERY. SEE PAGE 3 FOR DETAILS.

FOR THE RIGHT GEAR TO KEEP YOU WARM, PAIR THE ARCTIC DOUBLE-LINED FREEZER JACKET WITH THE ARCTIC DOUBLE-LINED FREEZER PANTS



ARCTIC DOUBLE-LINED FREEZER PANTS

ALT-1803

For full product details, see page W 119





ALT-HMM
Mens Hamilton Jacket

Fabric 100% polyester with PVC coating, polar fleece lining, polyester wadding • fully padded jacket with hood • elasticated cuffs • inner chest pocket • welt pockets

BL KH N

STANDARD FIT

HALF CHEST (CM)							
S	M	L	XL	2XL	3XL	4XL	5XL
55	58	61	64	67	70	73	76



ALT-HML

Ladies Hamilton Jacket

Fabric 100% polyester with PVC coating, polar fleece lining, polyester wadding • fully padded jacket with hood • elasticated cuffs • inner chest pocket • welt pockets

BL KH N

STANDARD FIT

HALF CHEST (CM)

S	M	L	XL	2XL	3XL	4XL
53	56	59	62	65	68	71



PADDED FOR EXTRA WARMTH ON A CHILLY DAY

BAS-7782 Mens Rego Jacket

Fabric 100% peached polyester • **lining**: 100% polyester taffeta
• **padding**: 100% polyester • padded outer • slanted welt pockets
• full zip • wind placket

BL KH N

HALF CHEST (CM) STANDARD FIT

S	M	L	XL	2XL	3XL	4XL	5XL
57	60	63	66	69	72	75	78



**BAS-7783****Ladies Rego Jacket**

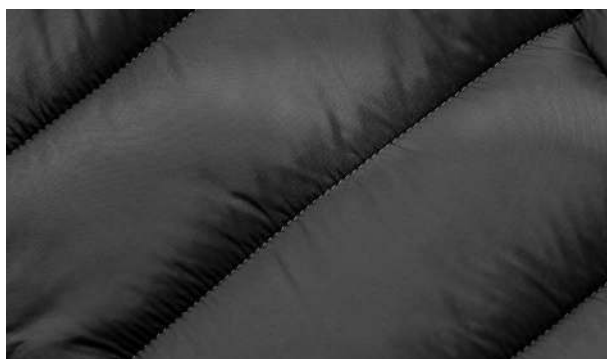
Fabric 100% peached polyester • **lining**: 100% polyester taffeta
• **padding**: 100% polyester • padded outer • slanted welt pockets
• full zip • wind placket

BL KH N

HALF CHEST (CM) **STANDARD FIT**

S	M	L	XL	2XL	3XL	4XL
50.5	53.5	56.5	59.5	62.5	65.5	68.5





BAS-11212

Mens Vallarta Jacket

Fabric 100% nylon • **lining**: 100% polyester • **padding**: polyester
 • fully padded and quilted outer • full zip • concealed pockets

BL GY N

HALF CHEST (CM) STANDARD FIT

S	M	L	XL	2XL	3XL	4XL	5XL
55	58	61	64	67	70	73	76





BAS-11213

Ladies Vallarta Jacket

- Fabric** 100% nylon • **lining:** 100% polyester • **padding:** polyester
• fully padded and quilted outer • full zip with dual zip pullers
• concealed pockets • extra length

BL GY N

HALF CHEST (CM) **STANDARD FIT**

S	M	L	XL	2XL	3XL	4XL
49	52	55	58	61	64	67



PRICE INCLUDES EMBROIDERY. SEE PAGE 3 FOR DETAILS.





DETACHABLE HOOD ON
MENS & LADIES JACKETS

JC-SL-107-A Mens Kyoto Jacket

Fabric 100% nylon • **lining:** 100% polyester • **padding:** polyester
• fully padded quilted outer and lining • slanted zip pockets with
branded zip pullers • full zip with branded zip pullers • chin
protector • partial wind placket • inner pocket • elasticated
binding on hem, sleeves and hood • detachable hood
• reflective Slazenger logo on back panel

BL N

HALF CHEST (CM) **STANDARD FIT**

S	M	L	XL	2XL	3XL	4XL	5XL
54	57	60	63	66	69	72	75



JC-SL-108-A Ladies Kyoto Jacket

Fabric 100% nylon • **lining:** 100% polyester • **padding:** polyester
• fully padded quilted outer and lining • slanted zip pockets with
branded zip pullers • full zip with branded zip pullers • chin
protector • partial wind placket • inner pocket • elasticated
binding on hem, sleeves and hood • detachable hood
• reflective Slazenger logo on back panel

BL N

HALF CHEST (CM) **STANDARD FIT**

S	M	L	XL	2XL	3XL	4XL
48	51	54	57	60	63	66







DETACHABLE HOOD ON MENS & LADIES JACKETS

SLAZ-11422**Mens Kyoto Two-Tone Jacket**

Fabric 100% nylon • **lining**: 100% polyester • **padding**: polyester
 • fully padded quilted outer and lining • slanted zip pockets with branded zip pullers
 • full zip with branded zip puller • chin protector • partial wind placket • inner pocket
 • elasticated binding on hem, sleeves and hood • detachable hood • reflective Slazenger logo on contrast back panel

**HALF CHEST (CM) STANDARD FIT**

S	M	L	XL	2XL	3XL	4XL	5XL
54	57	60	63	66	69	72	75

**SLAZ-11423****Ladies Kyoto Two-Tone Jacket**

Fabric 100% nylon • **lining**: 100% polyester • **padding**: polyester
 • fully padded quilted outer and lining • slanted zip pockets with branded zip pullers
 • full zip with branded zip puller • chin protector • partial wind placket • inner pocket
 • elasticated binding on hem, sleeves and hood • detachable hood • reflective Slazenger logo on contrast back panel

**HALF CHEST (CM) STANDARD FIT**

S	M	L	XL	2XL	3XL	4XL
48	51	54	57	60	63	66







Utah Jacket

Innovative design and superior quality finishes combine to create a modern, versatile and functional jacket that is incredibly warm and comfortable. The durable Nylon fabric is water repellent, wind resistant, quick drying and easy to maintain.

WIND
RESISTANTWATER
REPELLENT

JC-EL-109-A

Mens Utah Jacket

Fabric 100% nylon • **lining** 100% polyester • **padding** polyester
• fully padded quilted outer and lining • slanted zip pockets with
branded zip pullers • full zip with branded zip puller • partial wind
placket • inner pockets • elasticated binding on hem and sleeves

BL DG2 N

HALF CHEST (CM) **RELAXED FIT**

S	M	L	XL	2XL	3XL	4XL	5XL
57	60	63	66	69	72	75	78



JC-EL-110-A

Ladies Utah Jacket

Fabric 100% nylon • **lining** 100% polyester • **padding** polyester
• fully padded quilted outer and lining • slanted zip pockets with
branded zip pullers • full zip with branded zip puller • partial wind
placket • inner pockets • elasticated binding on hem and sleeves

BL DG2 N

HALF CHEST (CM) **RELAXED FIT**

S	M	L	XL	2XL	3XL	4XL
51	54	57	60	63	66	69





ELE-7306 & ELE-7307 ARE AVAILABLE IN THE 2 COLOURS SHOWN ON THIS SPREAD



ELE-7306

Mens Norquay Insulated Jacket

Fabric 100% polyester 210T, woven with water resistant coating and water repellent finish • **lining**: 100% polyester 290T • **filling**: 100% polyester faux-down • padded and quilted outer and lining • zip pockets with branded zip pullers • full zip with branded zip puller • chin protector • wind placket • quilted hood • elasticated binding on hood, cuffs and hem

BL N

HALF CHEST (CM) **STANDARD FIT**

S	M	L	XL	2XL	3XL	4XL
55.5	58.5	62.5	66	70	75	80

PRICE INCLUDES EMBROIDERY. SEE PAGE 3 FOR DETAILS.



Norquay Insulated Jacket

Combining warmth and trendy styling, the Norquay provides protection from the elements with 100% polyester faux-down insulation, an attached hood, interior storm flap and water repellent finish. With its retail look and logo-friendly back-shoulder panel, the Norquay will command attention for any brand.


WATER
REPELLENT


THERMALTECH

ELE-7307

Ladies Norquay Insulated Jacket

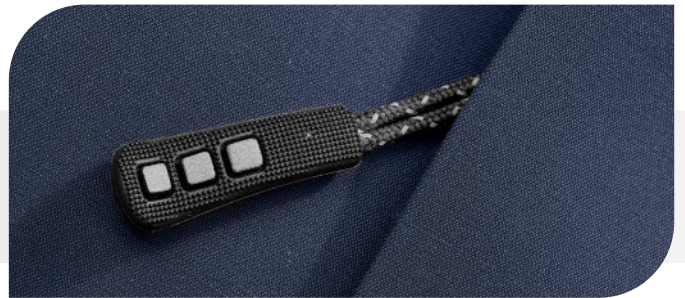
Fabric 100% polyester 210T, woven with water resistant coating and water repellent finish • **lining**: 100% polyester 290T • **filling**: 100% polyester faux-down • padded and quilted outer and lining • zip pockets with branded zip pullers • full zip with branded zip puller • chin protector • wind placket • quilted hood • elasticated binding on hood, cuffs and hem

BL N

HALF CHEST (CM) STANDARD FIT

S	M	L	XL	2XL	3XL
50	53.5	57	61	65	68.5

PRICE INCLUDES EMBROIDERY. SEE PAGE 3 FOR DETAILS.



ELE-11500

Mens Montana Jacket

Fabric 100% polyester • **lining** 100% polyester
 • **padding**: polyester • fully padded and quilted outer
 • full zip with branded zip puller • storm flap
 • chin protector • knitted storm inner collar
 • styled welt pockets • elasticated hem insert for snug fit • hood • rubber eyelets on pockets and hood • inner pocket

BL MG N R

HALF CHEST (CM) STANDARD FIT

S	M	L	XL	2XL	3XL	4XL	5XL
58	61	64	67	70	73	76	79



Montana Jacket

Made from 100% quilted and padded polyester the Montana Jacket features a knitted inner storm collar, full storm flap and elasticated hem inserts to ensure maximum protection from the elements.


WIND
RESISTANT

WATER
REPELLENT


ELE-11501

Ladies Montana Jacket

Fabric 100% polyester • **lining** 100% polyester
• **padding** polyester • fully padded and quilted outer
• full zip with branded zip puller • storm flap
• chin protector • knitted storm inner collar
• styled welt pockets • elasticated hem insert for snug fit • hood • rubber eyelets on pockets and hood • inner pocket

BL MG N R

HALF CHEST (CM) STANDARD FIT

S	M	L	XL	2XL	3XL	4XL
51	54	57	60	63	66	69





REMOVABLE HOOD ON MENS & LADIES JACKETS

ELE-4028

Mens Balkan Insulated Jacket

Fabric outer: 100% polyester, oxford fabric with water repellent finish • **lining:** 100% polyester taffeta body, sleeves and hood • concealed zip pockets with branded zip pullers • full zip with branded zip puller • storm flap with velcro tabs and press studs • slanted zip pocket on chest with branded zip puller • inner pocket with velcro closure • detachable hood with adjustable toggles • adjustable hem toggles • concealed knitted storm cuffs

BL BU

HALF CHEST (CM) **STANDARD FIT**

S	M	L	XL	2XL	3XL	4XL
58.5	61.5	65	68	71	74.5	77.5

ELE-4029

Ladies Balkan Insulated Jacket

Fabric outer: 100% polyester, oxford fabric with water repellent finish • **lining:** 100% polyester taffeta body, sleeves and hood • concealed zip pockets with branded zip pullers • full zip with dual branded zip pullers • storm flap with velcro tabs and press studs • inner pocket with velcro closure • detachable hood with adjustable toggles • concealed knitted storm cuffs with thumb exits

BL BU

HALF CHEST (CM) **STANDARD FIT**

S	M	L	XL	2XL	3XL
54	57	60.5	63.5	66.5	70



Balkan Insulated Jacket

Made from 100% quilted polyester, woven and coated with a water repellent finish. With features such as a detachable hood and rib-knit storm cuffs, the Balkan is the perfect jacket to keep the warmth in and the cold out.



HEADSET ACCESS

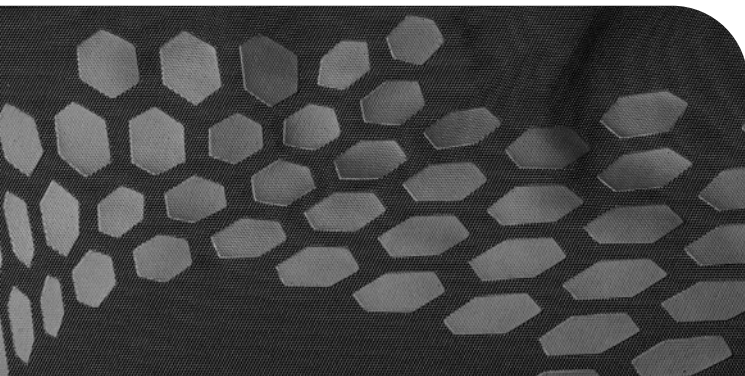


WATER REPELLENT



WIND RESISTANT

ELE-4028 & ELE-4029 ARE AVAILABLE IN THE 2 COLOURS SHOWN ON THIS SPREAD



STONE-ON-TONE TRANSFER GRAPHIC DETAIL ON MENS JACKET SHOULDERS & LADIES JACKET BACKS



LADIES JACKET FEATURES STRETCH KNIT STORM CUFFS WITH THUMB EXITS